

WILLOWS RIDGE | ESTATES



\$2,650,000

5 

3.75 

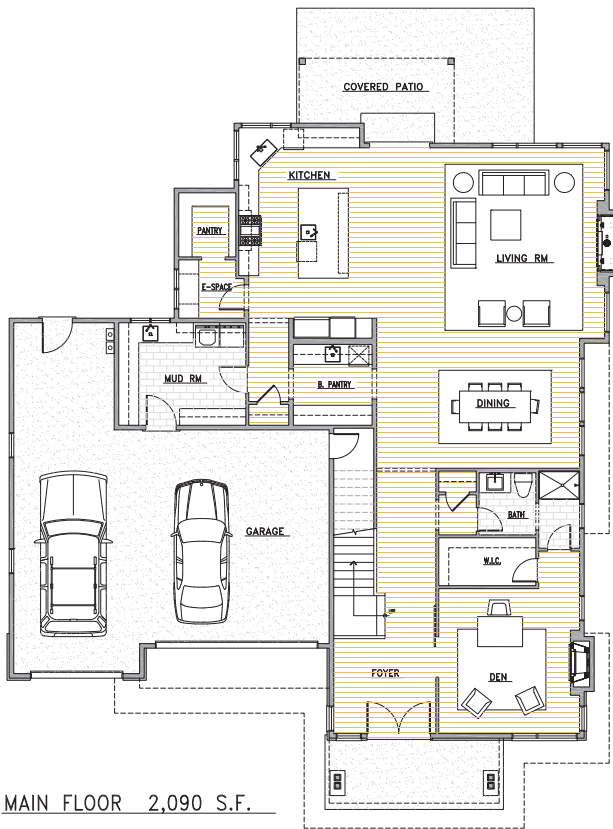
4,488 
SF

1.47 
ACRE LOT

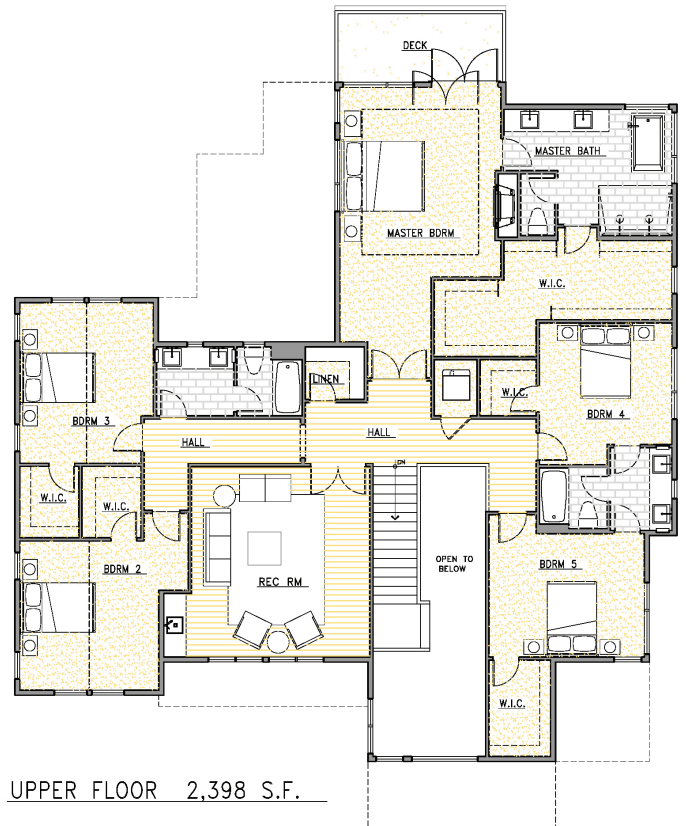
-
- Great Room Open Concept & Farmhouse Design
 - Professional Landscaping with Irrigation
 - Main Floor Office with Fireplace & Adjoining 3/4 Bath
 - Rec Room with Wet Bar
 - Butler's Pantry with Subzero Wine Fridge
 - Designer Selected High-End Finishes
 - Air Conditioning
 - Three Car Garage
 - Recirculating Tankless Hot Water System
 - HEPA Air Filtration & 95% Energy Star Furnace
 - Three Contemporary Fireplaces
 - Extensive Wide Plank Hardwood Flooring
 - All 5 Bedrooms Upstairs
 - Spa-Like Master Retreat
 - Solid Core Doors Throughout
 - Commercial Grade Wolf & Subzero Appliances

THE SAHALE PLAN

Sprawling 2 story foyer with formal office featuring contemporary fireplace off the entry to this open concept custom modern farmhouse design. Wide open concept Great Room highlighted by chefs kitchen featuring Wolf and Subzero appliance package, oversized island with prep sink and raised eating bar. Dining and family rooms flooded with natural light through floor to ceiling windows overlooking private greenspace and open to covered patio. Main floor further accentuated by walk in pantry, convenient e-space, butler's pantry with beverage center, and well-appointed mudroom. Upper floor features 5 spacious bedrooms, 3 full baths, and expansive rec room with full wet bar. Master Suite accented by spa like bath, fireplace, enormous walk in closet, and private deck overlooking your private 1.47 acre lot.



MAIN FLOOR 2,090 S.F.



UPPER FLOOR 2,398 S.F.

RYAN TUTTLE
206.384.2910
TUTTLE@BURNSTEAD.COM